




MAPFRE Global Risks

EXCELLENCE IN THE MANAGEMENT
OF GLOBAL RISKS

2025

The background of the slide is a composite image. On the left, a worker in a yellow hard hat and safety vest stands on a vast field of solar panels. On the right, a large concrete dam is shown, with a body of water and a desert landscape in the background. A large white circle on the right side of the image frames the text.

At MAPFRE Global Risks, we protect the interests of large enterprises all around **worldwide, creating **long-term relationships**.**

We are specialists in **Large Enterprise Risk Management, International Programs, Captives, Specialty Lines and Risk Consulting** through our **Engineering Services**.

Our commitment to the **sustainability of the planet** and the **well-being of society** underlines everything we do.

We care about what matters to you.

Table of contents

Who are we? 01

Our clients 02

Value proposition 03

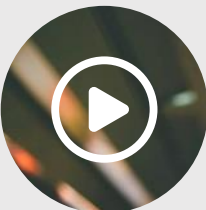
Relationship model 04

International presence 05

Responsability and commitments 06

Key figures 07

Team 08



Play corporate video

2024 DATA



* Source: S&P Global Ratings



The Global Risks Unit

MAPFRE's dedicated global risks unit specialized in providing insurance solutions to:

- > Large businesses
- > Multinational companies
- > Companies in global business sectors (Specialty Lines)

Our clients

01

02

Our clients

03

04

05

06

07

08



Companies with
**International Insurance
Programs and/or
Captive Companies**



Companies in **Global
Business Sectors**
(Specialty Lines)

- > Energy
- > Construction
- > Mining
- > Marine & Cargo
- > Aviation



Large local companies with
revenue exceeding:

€ 800 M in Spain
\$ 450 M in Brazil
\$ 300 M Rest of World (*)

*Lower limits apply in some countries in
LATAM, adjusted to each market.

Our value proposition



Specialization by lines of business

- > Property and Casualty
- > Specialty lines
- > Global Employee Benefit Programs



International and Captive Program Management Experts



Client-focused management

- > Agility and flexibility
- > Operational efficiency



Engineering services

- > Risk control and evaluation for Underwriting
- > Client services



International presence

- > Own network
- > Partners and Partner Network



Sustainability

Committed to the environment and social well-being



Long-term commitment and financial strength

03

Our value proposition

05

06

07

08

Global Risks

GLOBAL MANAGEMENT AND LOCAL SERVICE



CLIENT SERVICE

Service to the client through the **local MAPFRE** company that is familiar with the **needs of the market** and **regulatory requirements** of each country.

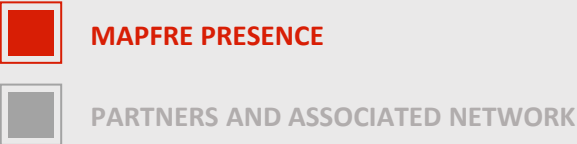
TECHNICAL SUPPORT AND CAPACITY

MAPFRE Global Risks makes it easy for the local MAPFRE company to provide:

- > **Technical support**
 - Underwriting
 - Claims management
 - Operations deployment
- > **Capacity contribution**
- > **Support in defining the Business Development Strategy**

International presence

WE OFFER SERVICES ON ALL FIVE CONTINENTS



84%
GLOBAL
COVERAGE*

+2,816
CLIENTS

+70%
PREMIUMS ISSUED
OUTSIDE SPAIN



05
International
presence

*We offer services in 163 countries through our offices, partners and partner network.
Subject to the corresponding analysis, on a case-by-case basis, on international sanctions.

Our environmental commitments

MAPFRE holds firm on its environmental commitments in the insurance and reinsurance underwriting business to play our part by contributing to the transition **to a low-carbon economy**, assisting clients in their decarbonization and energy transition processes and reaffirming our commitment to be a **zero-emissions company by 2050**. These commitments have been approved by the Board of Directors and extend to Group companies. The MAPFRE Group's Underwriting Policy Committee will be monitoring compliance with these commitments.

We have set limits for the following sectors:



ENERGY TRANSITION

MAPFRE will **not insure coal, gas and oil companies** that do not commit to an energy transition **plan*** to maintain global warming at around 1.5°C.



COAL

We have established **limits on the insurance** of certain coal-related projects and companies.



OIL & GAS

We have undertaken **environmental commitments** in the insurance of new projects related to **tar sands and Arctic projects, shale oil and gas, and ultra-deepwater**.

As a sign of our commitment, we have the following Environmental Certificates:



For more details on the environmental commitments of the MAPFRE Group, see:
[ENVIRONMENTAL COMMITMENTS IN INVESTMENT AND UNDERWRITING](#)

* Definition according to the National Integrated Energy and Climate Plan (PNIEC) 2021-2030. Ministry for Ecological Transition and Demographic Challenge (Spain).

Our commitments to social wellness

50^{Años} Fundación MAPFRE

The Fundación MAPFRE is a non-profit organization whose main objective is to contribute to the progress of society, improve people’s quality of life and promote equal opportunities.

Big numbers 2024



+8,000

VOLUNTEERS IN
25 COUNTRIES



+4.7 M

FROM BENEFICIARIES



+25

COUNTRIES

Impact on 11 Sustainable Development Goals (SDG)



06
Responsability and
commitments

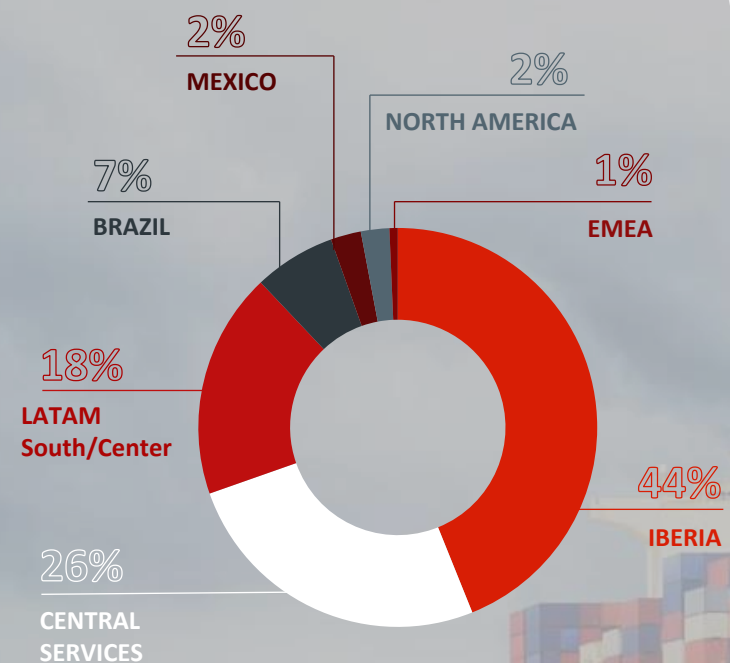
Key Figures 2024

€ 1,819 M
PREMIUMS

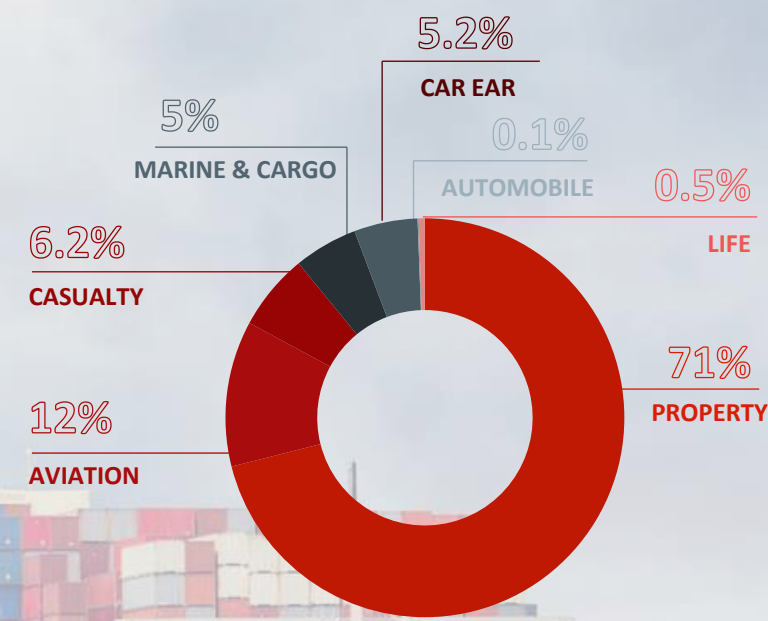
87.8%
COMBINED RATIO

€ 39.7 M
EARNINGS
AFTER TAX

PREMIUMS BY REGION Market View



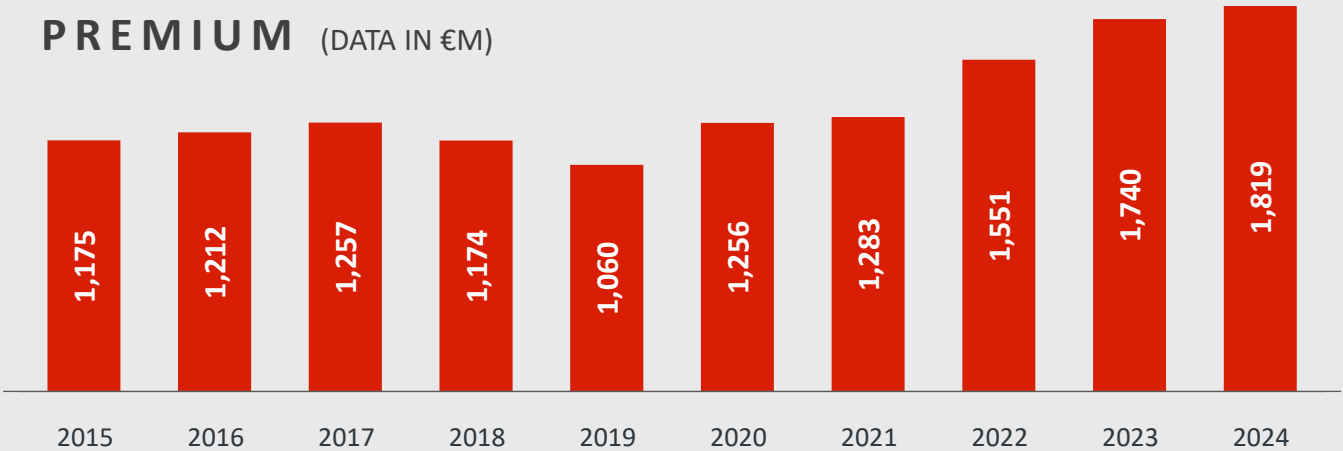
PREMIUMS BY BUSINESS LINE



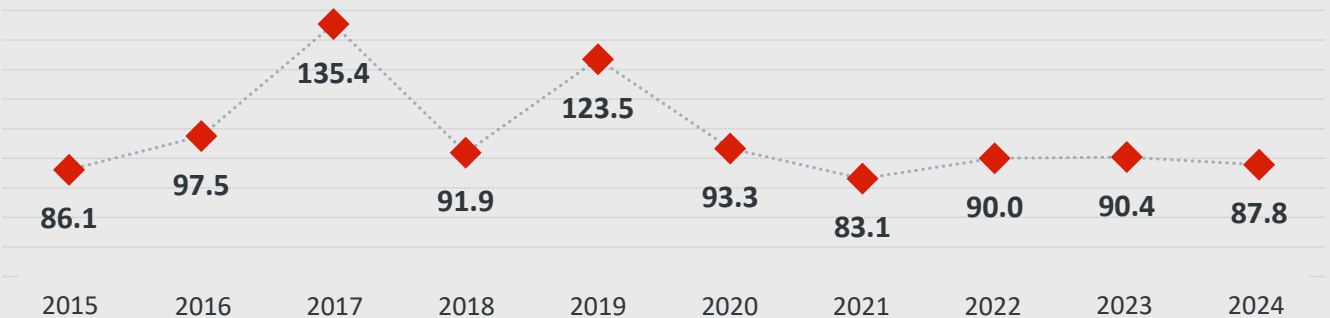
07
Key
figures

Historical Key Figures

PREMIUM (DATA IN €M)



COMBINED RATIO (DATA IN %)



01

02

03

04

05

06

07

Key
figures

08

Team



CEO
Bosco Franco



**UNDERWRITING AND
RISK ENGINEERING**
José Antonio Ruibal (*)



CLAIMS
José Carlos Nájera (*)



OPERATIONS AND DATA
Carlos Villanueva (*)



BUSINESS DEVELOPMENT
Álvaro Núñez (*)



IBERIA MARKET
Santiago Martín (*)



LATAM MARKET
Paola Serrano (*)



**ADMINISTRATION
AND FINANCE**
Rosa Hernández (*)



LEGAL DEPARTMENT
Laura González (**)



HUMAN RESOURCES
Lourdes Moreno (*)



**STRATEGIC PLANNING
AND INNOVATION**
Manuel de la Campa (*)



IT
Javier Mora

08
Team

*Management Committee Members

** Secretary of the Steering Committee / Secretary of the Board of Directors

Global Risks

MAPFRE Global Risks

EXCELLENCE IN THE
MANAGEMENT OF GLOBAL RISKS

Issued by:

| AENOR | AENOR | AENOR | AENOR | AENOR |
|----------------------|--|-----------------------------|--|------------|
| ENERGY MANAGEMENT | BUSINESS CONTINUITY MANAGEMENT SYSTEM | ENVIRONMENTAL MANAGEMENT | CARBON FOOTPRINT CALCULATED CO ₂ | ZERO WASTE |
| ISO 50001 | ISO 22301 | ISO 14001 | | |

Recognized by:

